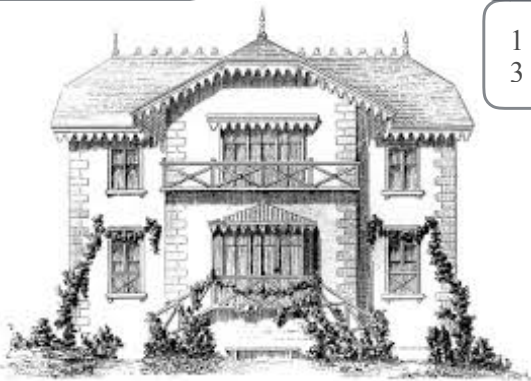


Culture

- Families in France
- Pets in France
- The metric system

- |            |                                                                                        |
|------------|----------------------------------------------------------------------------------------|
| 1 2<br>3 4 | 5.1 A- I can ask and answer questions about my family.                                 |
| 1 2<br>3 4 | 5.1 B- I say what people do using -ER verbs (we, you guys, they).                      |
| 1 2<br>3 4 | 5.1 C- I can say what people are and have (we, you guys, they).                        |
| 1 2<br>3 4 | 5.1 D- I can use possessive adjectives to describe the relation between people/things. |
| 1 2<br>3 4 | 5.1 E- I can use direct object pronouns.                                               |
| 1 2<br>3 4 | 5.1 F- I know all of the family vocabulary.                                            |

5.1- I can talk about my family and pets.



Culture

- Futur expressions

- |            |                                                              |
|------------|--------------------------------------------------------------|
| 1 2<br>3 4 | 5.2 A- I can ask and answer questions about my future plans. |
| 1 2<br>3 4 | 5.2 B- I can talk about the future plans of others.          |

5.2- I can talk about my future activities.

